

බස්නාහිර පළාත් අධ්‍යාපන දෙපාර්තමේන්තුව மேல் மாகாணக் கல்வித் திணைக்களம் Department of Education - Western Province	
වර්ෂ අවසාන ඇගයීම ஆண்டிறுதி மதிப்பீடு - 2017 Year End Evaluation	
ශ්‍රේණිය } 08 தரம் } Grade }	විෂය } Science பாடம் } Subject }
පත්‍රය } வினாத்தாள் } I, II Paper }	කාලය } 02 hrs. காலம் } Time }
Name :- IndexNo :-	

- Underline the correct answer.

Part I

- (01) Of the following microorganism which is a unicellular fungus,
 (1) Mucor (2) Yeast (3) Amoeba (4) Paramecium
- (02) Choose the answer that contains plants with underground stems.
 (1) Sweet potatoes, ginger, turmeric
 (2) Collocasia, sweet potatoes, turmeric
 (3) Ginger, turmeric, onion
 (4) Onion, potatoes, sweet potatoes
- (03) This is **not** a property of metals.
 (1) Conducts electricity (2) Conducts heat
 (3) Brittleness (4) Malleable
- (04) The part of the central nervous system that controls the heart rate is
 (1) Cerebrum (2) Cerebellum
 (3) Spinal cord (4) Medulla oblongata
- (05) Standard measuring unit of density is,
 (1) kilogram per cubic meters (2) cubic meters per kilogram
 (3) kilogram per cubic centimeters (4) cubic centimeters per kilogram
- (06) The group of animals that possess a dry skin with scales and no glands is
 (1) Pisces (2) Amphibia
 (3) Reptilia (4) Aves
- (07) The answer which contains musical instruments that produce sound by vibrating membranes, air columns and strings in order is
 (1) Drum, flute, guitar (2) Flute, guitar, drum
 (3) Guitar, drum, flute (4) Drum, guitar, flute

(08) From the methods of protecting iron which method increases the rate of rusting when it is scratched?

- (1) Galvanizing
- (2) Apply tin
- (3) Apply paint
- (4) Apply grease

(09) The units used to measure potential difference, current and resistance are,

- (1) Volt, Ampere, Ohm
- (2) Ampere, Ohm, Volt
- (3) Ohm, Volt, Ampere
- (4) Volt, Ohm, Ampere

(10) Elements present in copper sulphate are

- (1) Copper, Sulphur, Hydrogen
- (2) Copper, Hydrogen, Oxygen
- (3) Copper, Sodium, Oxygen
- (4) Copper, Sulphur, Oxygen

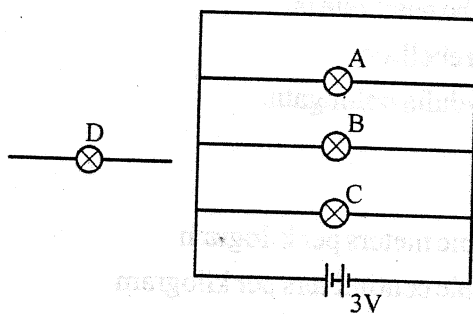
(11) A substance that undergoes sublimation is,

- (1) Ice
- (2) Wax
- (3) Camphor
- (4) Iron

(12) The answer which contains magnetic substances only is,

- (1) Iron, Nickel, Brass
- (2) Chromium, Ferrite, Iron
- (3) Nickel, Zinc, Ferrite
- (4) Copper, Iron, Steel

(13) A, B and C bulbs are connected parallel to a circuit under 3V voltage supply. If another bulb named as 'D' connected to the circuit parallel, what can you say about the brightness of A, B, C and D

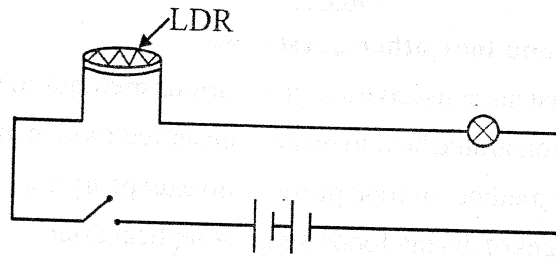


- (1) A, B and C light up with more brightness while D lights up with less brightness.
- (2) D lights up with more brightness while A, B and C light up with less brightness.
- (3) A, B, C and D light up with equal brightness.
- (4) The brightness of A, B, C and D are getting lowered.

(14) A plant leaf taken from an outdoor plant is boiled in water and after that it is boiled in alcohol. Then it is washed well with clean water. When few drops of Iodine are put on the leaf it turns into dark blue colour. What could be the conclusion?

- (1) Chlorophyll is essential for the photosynthesis.
- (2) Sunlight is essential for the photosynthesis.
- (3) Water is essential for the photosynthesis.
- (4) Carbon dioxide is essential for the photosynthesis.

(15)



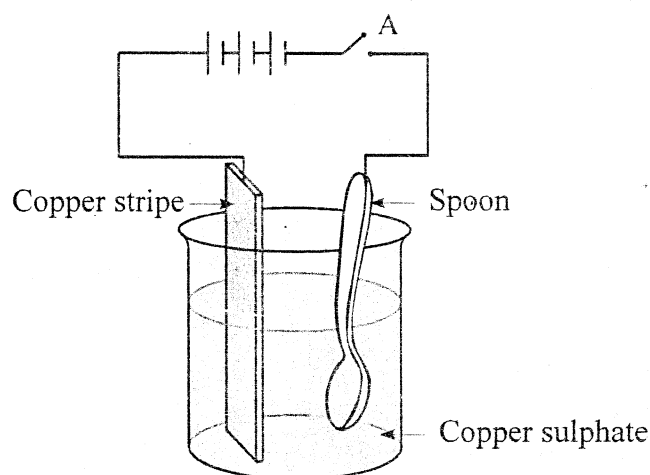
When the switch is on the circuit which is kept near the window of the laboratory, the bulb glows slightly. What can you say about the brightness of the bulb when a laser beam is projected towards the bulb?

- (1) The brightness will be more than the initial brightness.
 - (2) The brightness will be less than the initial brightness.
 - (3) The brightness will be equal to the initial brightness.
 - (4) Cannot get exact observation.
- (16) Which of the following gas is released by plants during photosynthesis?
- (1) Oxygen
 - (2) Carbon dioxide
 - (3) Water vapour
 - (4) Nitrogen dioxide
- (17) Choose the correct statement
- (1) Guttation occurs at night and transpiration occurs during day time.
 - (2) Transpiration occurs at night and guttation occurs during day time.
 - (3) Only water is released in guttation.
 - (4) Guttation occurs through stomata.
- (18) What is the first launched artificial satellite?
- (1) Appolo 11
 - (2) Sputnik 1
 - (3) Telstar 1
 - (4) Explorer 1
- (19) What can you observe when Phenolphthalein is added to Sodium hydroxide solution and excess Hydrochloric acid added next to it,
- (1) Pink colour turns into red colour
 - (2) Pink colour turns into colourless
 - (3) Red colour turns into pink colour
 - (4) No colour change
- (20) What is the most suitable method to study about all the organisms on the earth?
- (1) Study about each organism on the earth separately
 - (2) Study about each organism live in each country separately.
 - (3) Classify organisms into groups according to their common characteristics and study them.
 - (4) Separate out organisms live in large forests and study about them.

Part II

❖ Answer the 1st question and four other questions.

- (01) A. From the distant past humans have adopted various methods to preserve food.
- ✓ You may have demonstrated how to make a preserved food in the classroom.
- (1) Write a traditional method of food preservation except drying. (1M)
 - (2) Write two advantages of drying food using a solar heat drier. (2M)
 - (3) What is the method used to make milk powder from liquid milk? (1M)
 - (4) Write a food that can be preserved using the concentration method. (1M)
 - (5) Write two important information that should be stated on a label of a packed food. (2M)
- B. Following is a set up made by a group of students for an experiment.



- (1) Which product of electricity is demonstrated by this set up? (1M)
 - (2) Write one observation of the spoon after closing the switch for 10 min? (1M)
 - (3) Write an instance which this method is used. (1M)
- C. Natural disasters are naturally occurring destructive incidents, without the mediation of man, causing harm to human lives, property, environment and economy.
- (1) Write one natural phenomenon and one human activity which cause drought. (2M)
 - (2) Write one strategy you can take at present to cope with future droughts. (1M)
 - (3) Write two pre signs of a land slide. (2M)
 - (4) Write one strategy of managing lightning hazards. (1M)

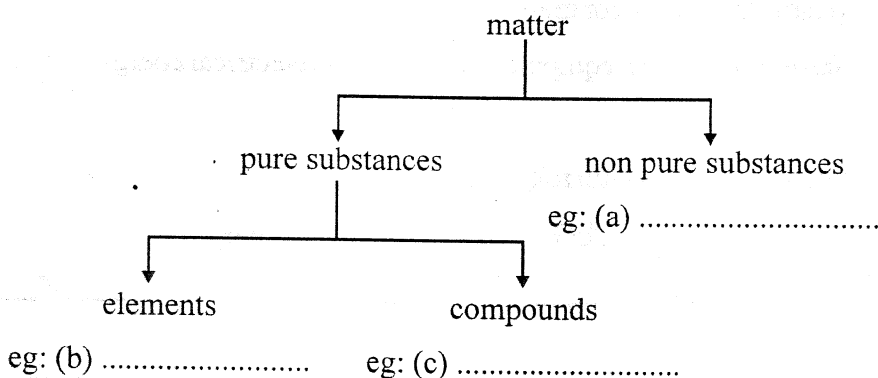
(16 Marks)

(02) A. The status matter exists as a collection of particles with spaces among them is known as discontinuous nature or particulate nature of matter.

(1) Complete the following table related with solids, liquids and gases. (3M)

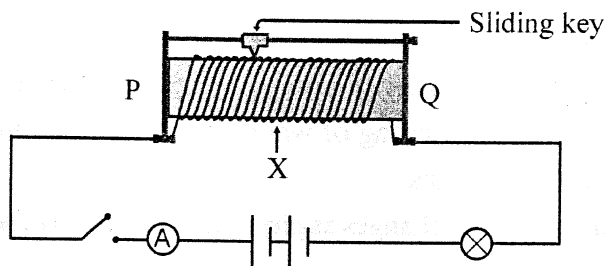
	Shape	Volume	Compression
Solid	Fixed	(b)	Cannot
Liquid	Not fixed	Fixed	(c)
Gas	(a)	Not fixed	Can

(2) Complete the following chart using suitable examples.



(3M)

B. A circuit with a device that can control the current is shown in the following diagram.



(1) Name the device X. (1M)

(2) If the slider moves towards P after closing the switch

(i) What happens to the reading of A? (1M)

(ii) What happens to the brightness of the bulb? (1M)

(iii) Explain the reasons for answers given in 1 and 2 above. (2M)

(11 Marks)

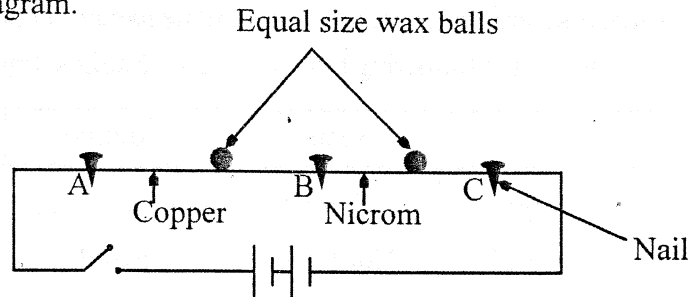
(03) A. The sequence of events in stages of development as a cyclic process, which a living organism passes from its birth to death is termed as a life cycle.

(1) What is known as metamorphosis? (1M)

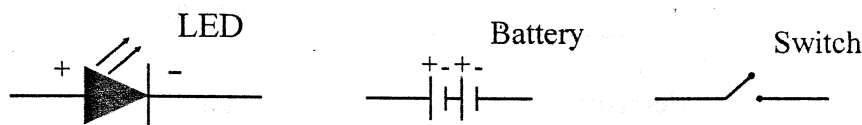
(2) Write the stages of an organism having a complete metamorphosis in order (2M)

(3) Write two advantages of having metamorphosis for organisms. (2M)

- B. A circuit which is set up to demonstrate heating effect of electricity is shown in the following diagram.



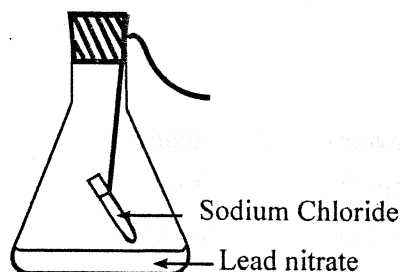
- (1) When two wax balls are kept on Copper and Nichrome wires, wax ball on which wire melts first? (1M)
- (2) What is the reason for that? (2M)
- (3) Name an electrical equipment that converts electrical energy into heat energy. (1M)
- (4) You are provided with following things. (2M)



Draw the circuit diagram which is made to light up the LED using the connecting wires. (11Marks)

- (04) A. Transformation of the existence nature of matter is called a change of matter. Melting of solid wax, burning of wood, evaporation of water, rusting of iron are examples for such changes.

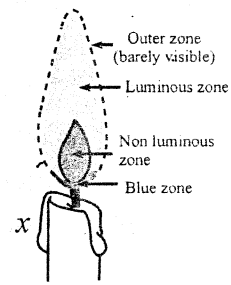
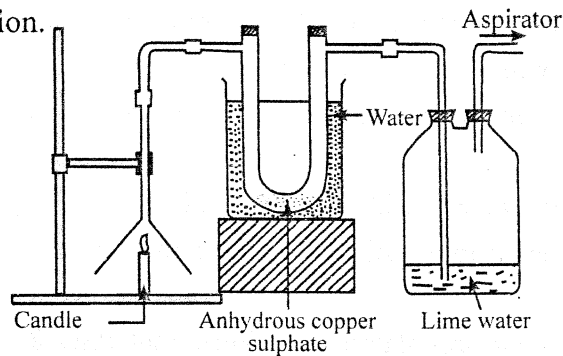
- (1) Classify the above changes as physical changes and chemical changes. (2M)
- (2)



The mass of the set up before the reaction is 12.82g. Then the two solutions were mixed.

- (i) From which observation can you confirm that a reaction has occurred in the system? (1M)
- (ii) What can you say about the mass of the system after the reaction? (1M)
Is it more than 12.82g? Less than 12.82g or equal to 12.82g?
- (iii) What is the reason for your answer for the above question (ii)? (2M)

- B. Different materials and energy are released to the environment when substances are burning. Following is a set up arranged to identify the products formed during combustion.



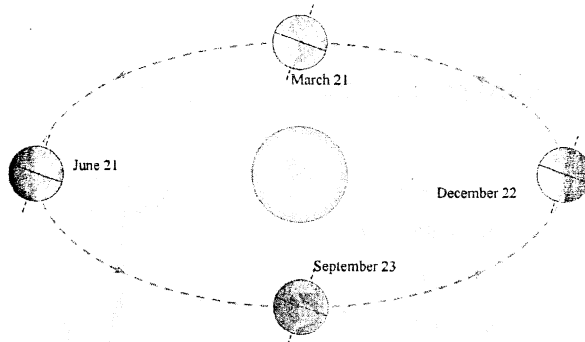
When the aspirator turns on,

- (1) Write one observation taken place at anhydrous Copper sulphate. (1M)
- (2) Write one observation of lime water. (1M)
- (3) What are the products of combustion according to the above observations? (2M)
- (4) x is a clear image of the candle flame given here. (1M)

Name the zone which has the highest temperature.

(11 Marks)

(05) A.



Occurrence of seasonal changes on earth is shown in the diagram.

- (1) Are the rays of the sun fall over the northern hemisphere perpendicularly or with an inclination on the 21st of June? (1M)
- (2) What is the season of the northern hemisphere according to the reason mentioned above? (1M)
- (3) What is the reason for having very warm climate in Sri Lanka around 21st March? (2M)
- (4) What is the main reason for the occurrence of seasonal changes? (1M)

B. One of the marvelous scenes that can be observed in the sky is eclipses.

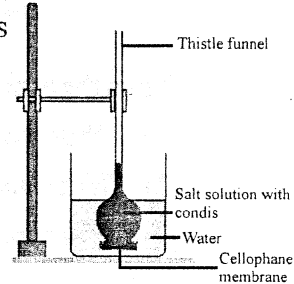
- (1) Write the order of position of earth, sun and moon in a solar eclipse. (1M)
- (2) On which day a solar eclipse occurs? (1M)
- (3) What is the constellation helps to find the North direction at night? (1M)
- (4) What is known as zodiac? (2M)
- (5) What is the unit used to measure the distance between stars? (1M)

(11 Marks)

- (06) A. As green plants produce their own food, they are known as autotrophs.
- What is the name of the process of producing food? (1M)
 - How would the following factors obtain for that process? (2M)
 - Carbon dioxide
 - Water
 - The word equation related with the above process is given below. Fill a and b blanks.
 Carbon dioxide + water $\xrightarrow{\text{(a)}}$ (b) + Oxygen (2M)
 - Write a global environmental importance of this process. (1M)

B. There are several mechanisms of transportation of materials

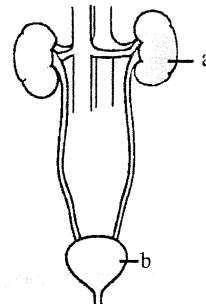
- Which mechanisms is demonstrated by using the above apparatus? (1M)
- Write two observations in this apparatus after several minutes. (2M)
- Cellophane membrane allows only some particles to move through it. What kind of a membrane is it? (1M)
- Name another membrane that can be used for this process instead of cellophane. (1M)



(11 Marks)

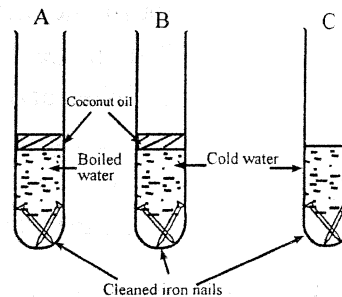
(07) A. The process that remove the useless products from the body is known as excretion.

- Name a and b. (2M)
- In which organ the nitrogenous waste of blood get filtered? (1M)
- Write two main reasons for occurring of kidney stones. (2M)



B. A set up that is arranged to test the factors need for rusting is shown below.

- Why the water in tube A is boiled? (1M)
- What is the purpose of adding coconut oil to A and B? (1M)
- Complete the following table. (4M)



	A	B	C
Iron nails rust/ do not rust	No	(a)	(b)
Reason	(c)	Cold water contains air	(d)